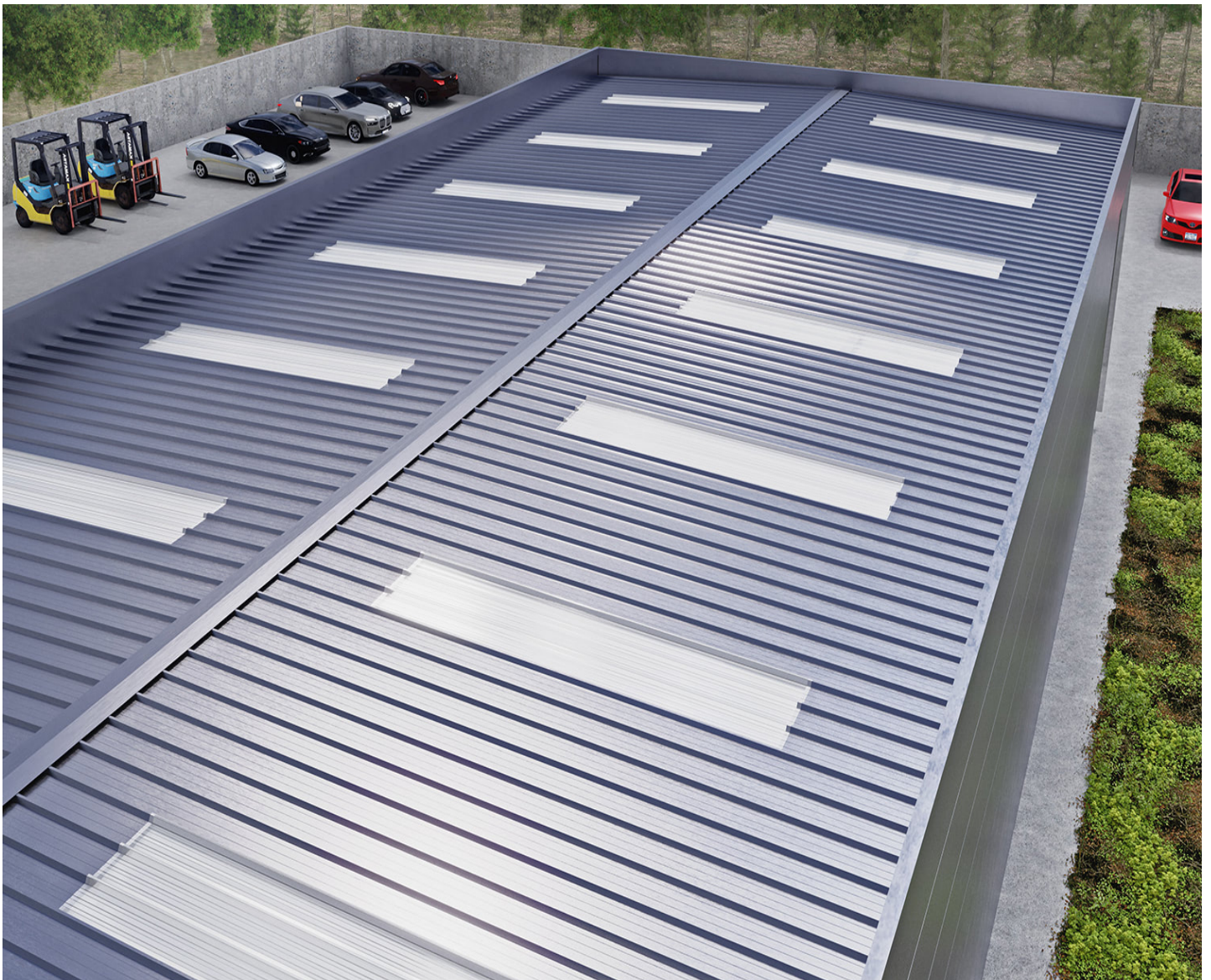


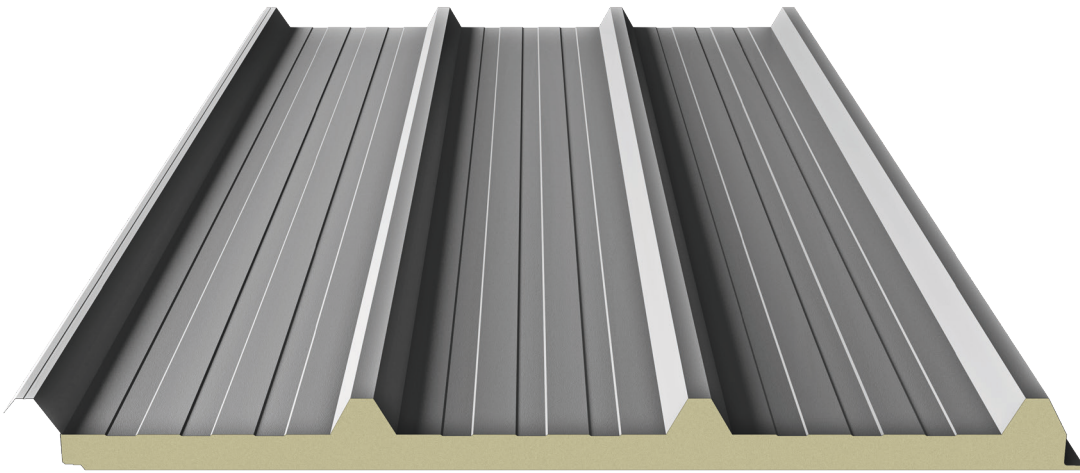
Product card

Sandwich panel

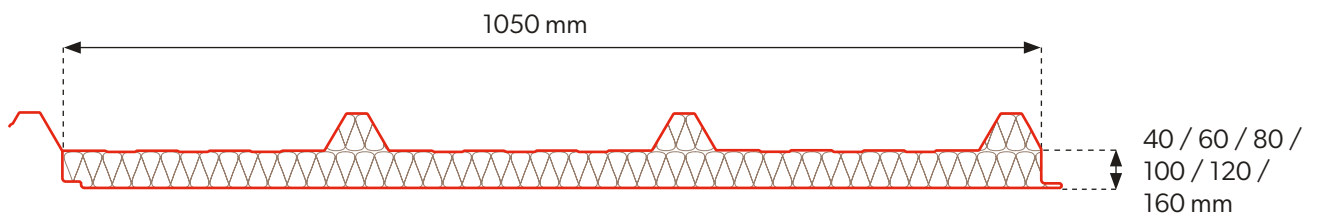
 **IG-Marktplatz 24**



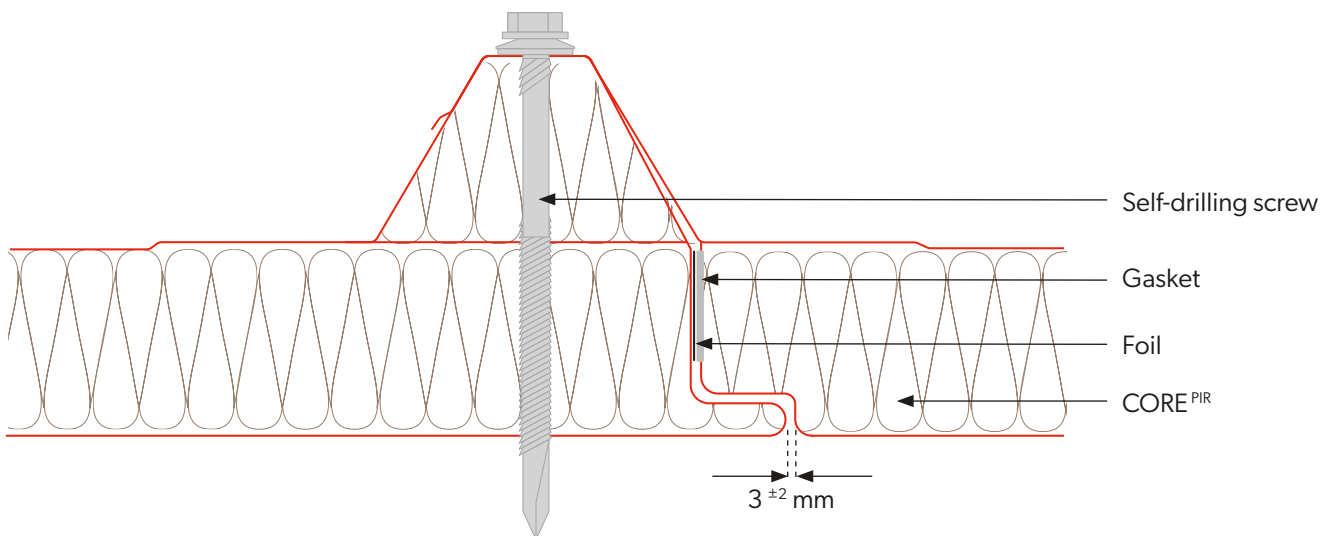
Technical information



Board cross-section



Joining of panels



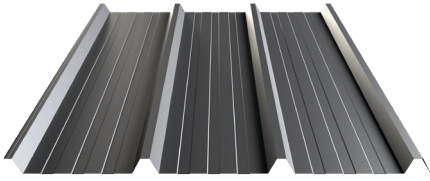
Technical information

Core	PIR					
Density [kg/m ³]	40 ± 3					
PIR panel thickness [mm]	40	60	80	100	120	160
Weight [kg/m ²]	9,8	10,6	11,5	12,3	13,2	14,8
Effective width [mm]	1050					
Total width [mm]	1127					
Min. panel length [mb]	2,5					
Max. panel length [mb]	13,5					
Outer/inner sheet thickness [mm]	0,4-0,7 / 0,4-0,7					
U-factor [W/m ² K].	0,55	0,37	0,28	0,22	0,18	0,14
Reaction to fire	B-s1,d0					
Wall resistance to external fire	REI15	REI20	REI30	REI45	REI45	REI45
Type of profiling ext. / int.	[T40] / [M], [T], [F]					
Corrosion resistance ext. / ext.	C1, C2, C3 (C4 ÷ C5) / A1 (A2 ÷ A5)					
Standard coatings	Poliester Interior [INT], Poliester Standard [RAL], HERCULIT [HC], MULTILAYER 40 [MLT]					
Special coatings	PVDF, PUR, PVC (P), PVC (F) - FoodSafe					
Accessories	Fastening system, gaskets, flashings, lighting profiles					

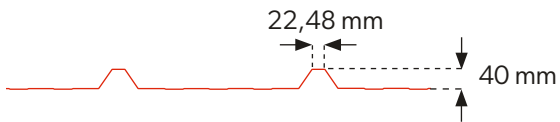
Packaging of sandwich panels

Panel thickness [mm]	Modular width [mm]	Quantity of panels in a package	Quantity of packages per vehicle	Package height [mm]	Package weight [kg]	Maximum loading length [m]	Quantity of panels per vehicle [m ²]
40	1050	20	4	1300	2600	12	1008
60	1050	10	6	900	2700	12	756
80	1050	12	4	1300	2600	12	605
100	1050	10	4	1300	2600	12	504
120	1050	8	4	1220	2440	12	403
160	1050	6	4	1180	2360	12	302

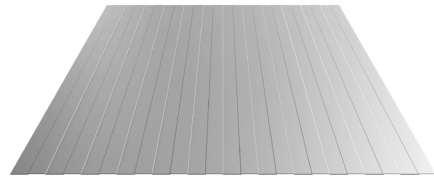
External profiling



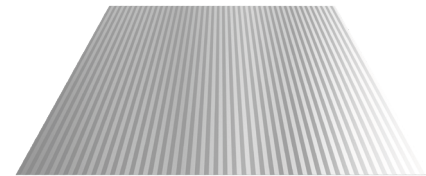
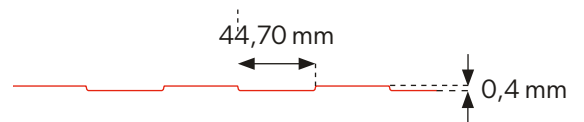
TRAPEZOIDAL 40 [T40]



Internal profiling



TRAPEZOIDAL [T]



MICRO RIB [M]



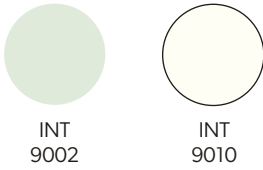
FLAT [F]



Internal and external profiling are available in any configuration.

Coatings and colors

POLYESTER Interior [INT] - Available colors for interior cladding



POLYESTER Standard [RAL] - Available colors for exterior cladding



HERCULIT [HC]



MULTILAYER 40 [MLT] - Available colors for exterior cladding



Printing technology does not allow faithful rendering of colors. Therefore the colors shown are indicative and may differ from actual colors.



In addition, on individual order, non-standard colors and coatings are available, outside the palette shown (PVDF, PUR, PVC (P), PVC (F) - FoodSafe).

Coating parameters

Code	Coating thickness	Corrosion resistance	UV resistance
POLIESTER Interior [INT]	15 µm	RA2	Not applicable
POLIESTER Standard [RAL]	25 µm	RC3	RUV2
HERCULIT [HC]	35 µm	RC4	RUV4
MULTILAYER 40 [MLT]	40 µm	RC3	RUV3

Notes

